

ADMISSIONS POLICY

1. Completed a bachelor's degree from an accredited institution.
2. Provide undergraduate official transcripts.
3. Undergraduate GPA of 2.5 and above.
4. If undergraduate GPA is less than 2.50, a GMAT score of 400 and above or a GRE score of 900 or above.
5. Be able to demonstrate adequate writing skills as measured by an initial writing assessment. (Admissions Essay).
6. Have a working knowledge of Office applications (Excel & Word).
7. Complete a Graduate Program application.
8. Two letters of references.
9. Resume.
10. Own computer with Microsoft Office and Webcam.



4425 W. Jose Regueiro (20th) Ave.
Hialeah, FL 33012
Phone: (305) 821-3333
Fax: (305) 362-0595

www.fnu.edu

Aide Memoire



Master of Business Administration

MBA

Program

With Concentrations in:

General Management

Marketing

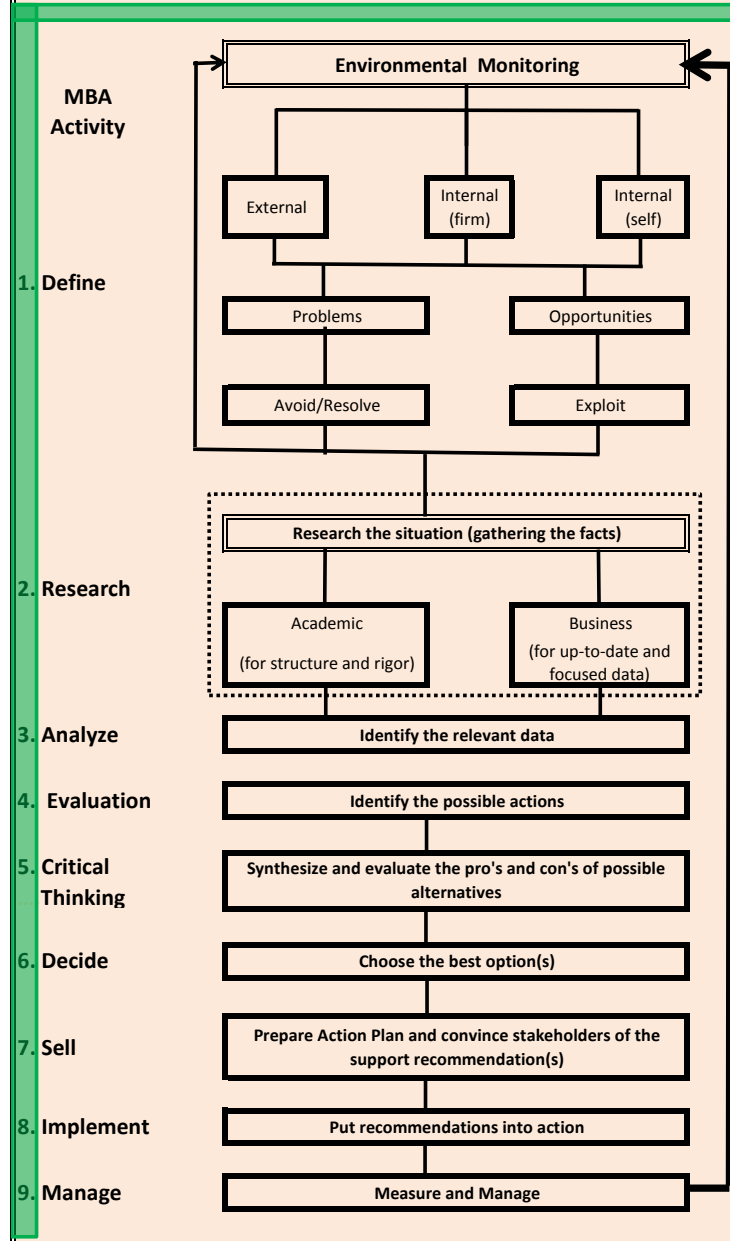
Finance

Health Services Administration

Public Management & Leadership

www.fnu.edu

The Real-World Life of an MBA



Mapping the Florida National University (FNU) MBA Program to the Real-World of an MBA

		Primary MBA Activity									
Course #	FSCNS*	Description	1	2	3	4	5	6	7	8	9
ACG5066		Accounting for Decision Makers									
MAN5068		Legal, Ethical, and social Values of Business									
QMB5357		Business Modeling									
FIN5409		Applied Managerial Finance									
ENT5125		Entrepreneurial and Strategic Thinking									
MAR5829		Management Practices for the 21st Century									
MAN5305		Human Resource Management									
MAN5245		Organizational Dynamics									
*FIN5416		Applied Managerial Finance II									
*FIN5246		Financial Institutions and Markets									
*FIN5307		Corporate Finance									
*MAN5508		Management & Operations in Service Organizations									
*MAR5849		Services Marketing									
*MAR5505		Consumer Behavior									
*MAR5157		International Marketing									
MAN5897		Capstone									
		Simulations	Incorporated into all Classes								
		Case Studies									
		Class Projects									
		Class and virtual Presentations									
		Research (Academic & Business)									

*Florida Statewide Course Numbering System

Other Considerations

- Hybrid Classes - One weekly live or virtual class (three hours) per course.
- Six start dates per year
- Flexible course scheduling -- program can be completed in 12 months.
- Affordable
- Regionally Accredited University